

## **Guy Bailey**

President, Texas Tech University

Guy Bailey became the fifteenth president of Texas Tech University on August 1, 2008.

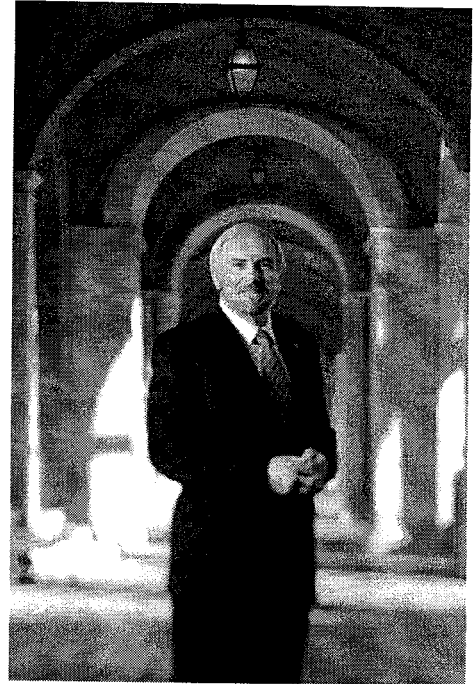
With the goal for Texas Tech to become a national research university, Bailey is leading the charge for the university to boost graduate and undergraduate enrollment and increase restricted research expenditures, as well as meet other criteria set forth by the legislature to ensure Tier One status for the university.

"Texas Tech is a unique and special place," Bailey said. "It has one of the brightest futures in American higher education. I am honored to be president and consider it a privilege to be a part of that future."

Prior to assuming this office, he served as chancellor of the University of Missouri-Kansas City (UMKC) from January 2006 until July 2008. He previously served as provost and executive vice president for academic affairs at the University of Texas-San Antonio (UTSA) from 1999 through 2005. Prior to his appointment as provost at UTSA, he served as associate vice president for research and dean of graduate studies at UTSA, as dean of liberal arts at the University of Nevada, Las Vegas, and as chair of the English departments at the University of Memphis and Oklahoma State University. Prior to serving as an administrator, he taught at Texas A&M and Emory universities.

Bailey is the author of about 100 books and articles, many co-authored by his wife, Dr. Jan Tillery, Texas Tech class of 1974. Tillery is a proud Red Raider, as were her mother, Mary Elizabeth Tillery, class of 1948, and her father, Clarence "Tim" Tillery, outstanding offensive end for the Red Raider football team from 1938-1941.

Bailey continues to do research on language variation and change, with special emphasis on the English of Texas and the American South, and in computational linguistics. The research on Texas English has been featured in a front-page article in the New York Times, on National Public Radio, on CNN Headline News, on BBC Radio, in Texas Monthly, and in the San Antonio Express-News.



Remarks Before Senate Higher Education Committee  
and House Higher Education Committee  
August 19, 2010  
Guy Bailey  
President,  
Texas Tech University

Few pieces of legislation have had as significant an impact on Texas Tech University as House Bill 51 has. That legislation has (1) given our faculty and staff a remarkable unity of purpose as we move toward national research status; (2) energized our alumni and supporters and provided the impetus for a significant increase in private support; and (3) served as the catalyst for new research partnerships with agencies such as Midwest Research Institute and National Renewable Energy Laboratory. More specifically, with HB51 as an impetus, we have:

1. Completed a strategic plan that provides a road map for moving to national research status. The plan calls for a focus on 8 research themes: sustainable environment (energy, water, agriculture, and the built environment), computational and theoretical sciences, advanced electronics and materials, integrative biosciences, community health and wellness, innovative education and assessment, culture and communication, and creative capital (arts and design technology).
2. Raised \$23.5 million in private gifts on September 1, 2009, for the Texas Research Incentive Program (TRIP), with the gifts coming from 28 different individuals, corporations, and foundations. The gifts have triggered (or will trigger) \$21.1 million in matching funds.
3. Created partnerships in cotton fiber science and wind energy that should have a significant economic impact on Texas. For instance, a \$5 million gift from Bayer Crop Science, which triggered a \$5 million TRIP match, will support a five-year research program that should lead to significant innovations in fiber properties.
4. Recruited 8 strategic hires who will bring significant research funding and research teams with them. Negotiations are in progress with several other strategic hires.
5. Used RDF funds to create a start-up package of \$2 million for one of the strategic hires. This researcher's work in nanomaterials and photosynthesis has typically created annual research expenditures of between \$1 and \$2 million per year.
6. Increased our graduate enrollment by more than 10% and significantly increased the number of undergraduates with research stipends.
7. Increased our restricted research funding from \$27 million in FY08 to \$35 million in FY09 and over \$40 million in FY10 (research spending is still in progress). Our total research expenditures have doubled since FY08 and will reach \$100 million in FY10.
8. Made significant progress on all of the metrics specified as National Research University Fund (NRUF) criteria.

Even as we have rapidly moved toward national research status, we have remained cognizant of the other goals that the State of Texas has for higher education. Between F08 and F09 our enrollment grew by 1675 students, our freshman-sophomore retention rate grew from 80% to 81%, and our five-year graduation rate increased from 54% to 58%. It is a great time to be at Texas Tech University, and the energy generated as a result of HB51 is one of the primary reasons why.



**Texas Tech University**  
**Tuition and Fee Assessment**  
**2010 – 2011 Academic Year**



**Three Major Changes in Tuition and Fees**

- Designated Tuition
- Library Fee
- Advising Fee



## Designated Tuition

- Increase of \$16.49 Per Semester Credit Hour
- Net \$9.1 Million Will be Generated
- Proceeds Will be Used to Accommodate Enrollment Growth, Strategic Faculty Hires, and Critical Research Equipment Needs



### FY 2011 Texas Tech University Budget Strategic Initiatives

New Faculty Lines- Strategic Hires	\$2,000,000
Faculty Lines- Enrollment Growth	\$2,800,000
New Faculty Lines- STEM Demand Areas	\$800,000
Pay Adjustments	\$500,000
President's Strategic Initiatives	\$1,500,000
Strategic Investments in Research Growth	\$1,500,000
<b>Total</b>	<b>\$9,100,000</b>



## Library Fee

- Increase of \$80 Per Semester for a Student Enrolled in 15 Hours
- Library Will Receive the Same Amount of Revenue
- Removes the Library from HEAF Funds and Enables the University to Allocate Dollars to Capital Projects



## Advising Fee

- \$4 Per Semester Credit Hour
- Allows for Comprehensive Advising and Retention Services Across All Colleges and Schools
- Will be Used to Fund Existing and New Advising and Retention Operations

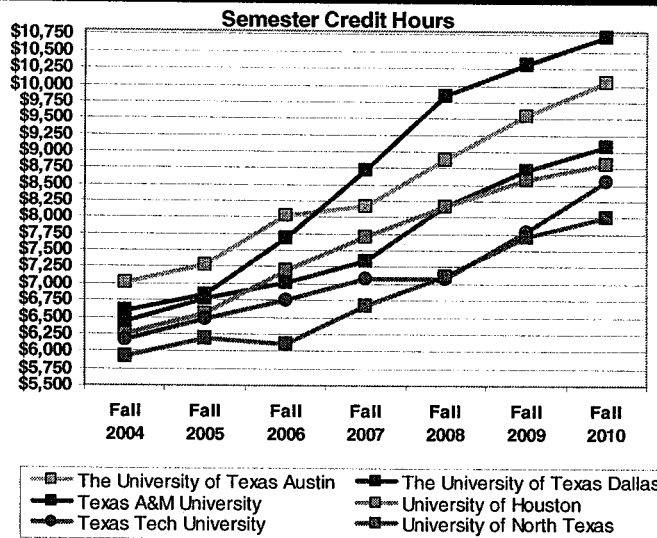


## Tuition Comparisons - State Peers

Based on 30 Semester Credit Hours

Institution	Annual Tuition and Fee Cost Fall 2007	Annual Tuition and Fee Cost Fall 2008	Annual Tuition and Fee Cost Fall 2009	Annual Tuition and Fee Cost Fall 2010
The University of Texas at Dallas	\$8,554	\$9,850	\$10,314	\$10,721
The University of Texas at Austin	\$8,060	\$8,874	\$9,540	\$10,055
Texas A&M University *	\$7,326	\$8,180	\$8,744	\$9,089
The University of Texas at Arlington	\$7,040	\$8,142	\$8,544	\$8,882
University of Houston	\$7,706	\$8,168	\$8,491	\$8,826
Texas Tech University	\$7,083	\$7,083	\$7,784	\$8,560
The University of Texas at San Antonio	\$6,848	\$7,666	\$8,092	\$8,460
University of North Texas	\$6,680	\$7,120	\$7,701	\$8,005
The University of Texas at El Paso	\$5,610	\$6,068	\$6,368	\$6,691

\* Estimated tuition and fees for Fall 2010





### Tuition Comparison - Big 12 Conference

Institution	Annual Tuition and Fee Cost Resident	Annual Tuition and Fee Cost Non-Resident
Baylor	\$ 28,070	\$ 28,070
The University of Texas at Austin	\$ 8,930	\$ 30,006
University of Missouri	\$ 8,501	\$ 19,592
University of Kansas	\$ 8,206	\$ 20,175
Texas A&M University	\$ 8,176	\$ 22,606
University of Colorado	\$ 7,932	\$ 28,186
University of Oklahoma	\$ 7,483	\$ 17,464
Kansas State University	\$ 6,870	\$ 17,577
Iowa State University	\$ 6,651	\$ 17,871
University of Nebraska	\$ 6,584	\$ 17,204
Texas Tech University	\$ 6,210	\$ 12,858
Oklahoma State University	\$ 6,202	\$ 16,556

Based on Fall 2009 Data

**12 Hours per Semester  
24 Semester Credit Hours per year**

Source: IPEDS



### Out-of-State Tuition Comparisons

Institution	Annual Tuition and Fee Cost Resident	Annual Tuition and Fee Cost Non-Resident
Pennsylvania State University	\$ 14,416	\$ 25,946
University of Illinois	\$ 12,528	\$ 26,670
Rutgers University	\$ 11,886	\$ 23,058
University of Michigan	\$ 11,659	\$ 34,937
University of Minnesota	\$ 11,466	\$ 15,466
Michigan State University	\$ 10,880	\$ 27,343
Ohio State University	\$ 8,679	\$ 22,251
Indiana University	\$ 8,613	\$ 26,160
Washington State University	\$ 8,489	\$ 19,565
University of California- Berkley	\$ 8,353	\$ 31,022
University of Wisconsin	\$ 8,310	\$ 23,059
University of California- Los Angeles	\$ 8,266	\$ 30,935
University of Kentucky	\$ 8,123	\$ 16,678
University of Washington	\$ 7,692	\$ 24,367
University of Alabama	\$ 7,000	\$ 19,200
University of Arizona	\$ 6,855	\$ 22,264
University of Tennessee	\$ 6,850	\$ 22,168
Arizona State University	\$ 6,844	\$ 19,629
University of Arkansas	\$ 6,459	\$ 15,336
Texas Tech University	\$ 6,210	\$ 12,858
University of North Carolina	\$ 5,626	\$ 23,513
Louisiana State University	\$ 5,233	\$ 14,383
University of New Mexico	\$ 5,101	\$ 17,254
New Mexico State University	\$ 4,998	\$ 15,150

Based on Fall 2009 Data

**12 Hours per Semester  
24 Semester Credit Hours per year**

Source: IPEDS